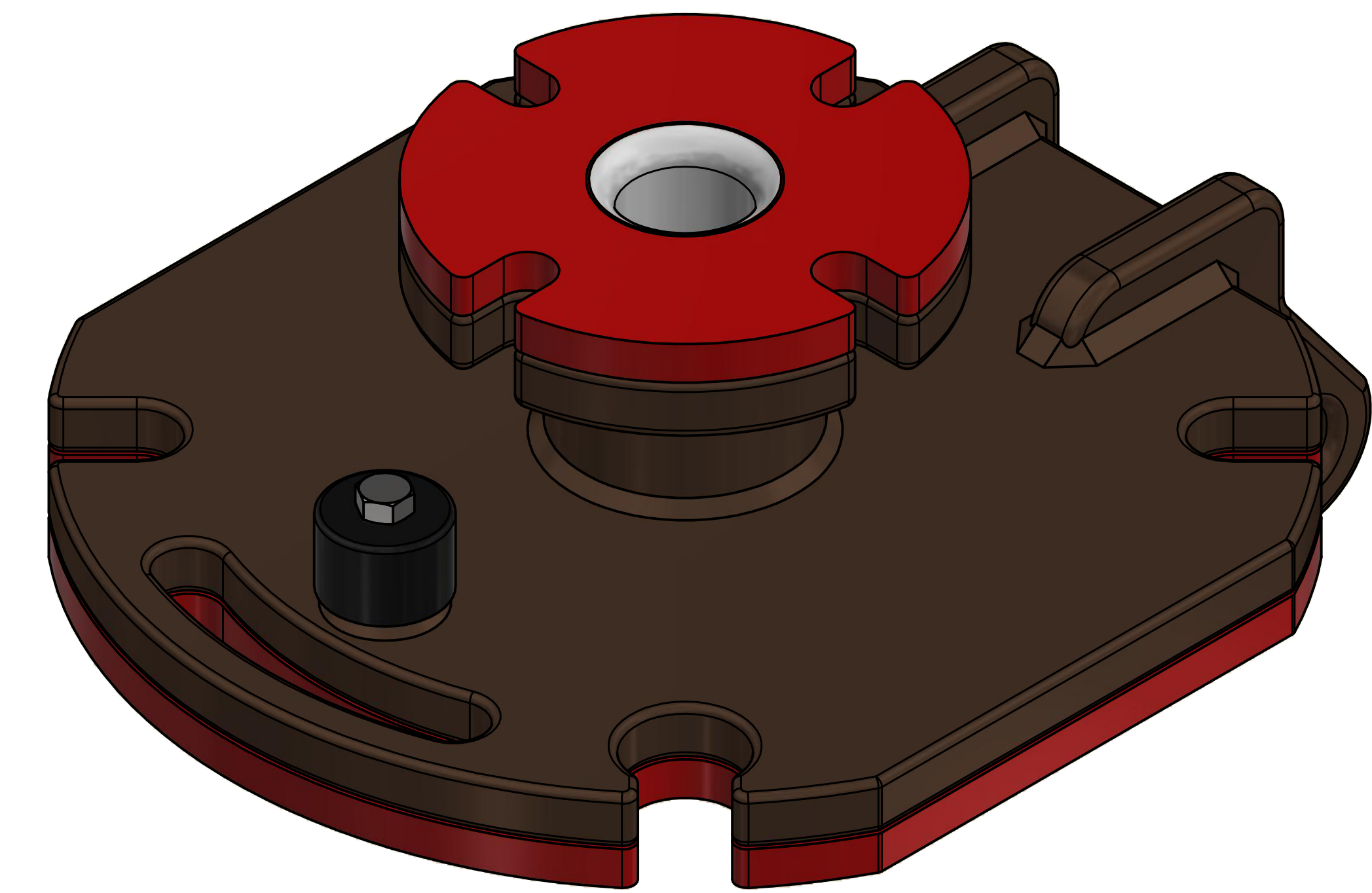
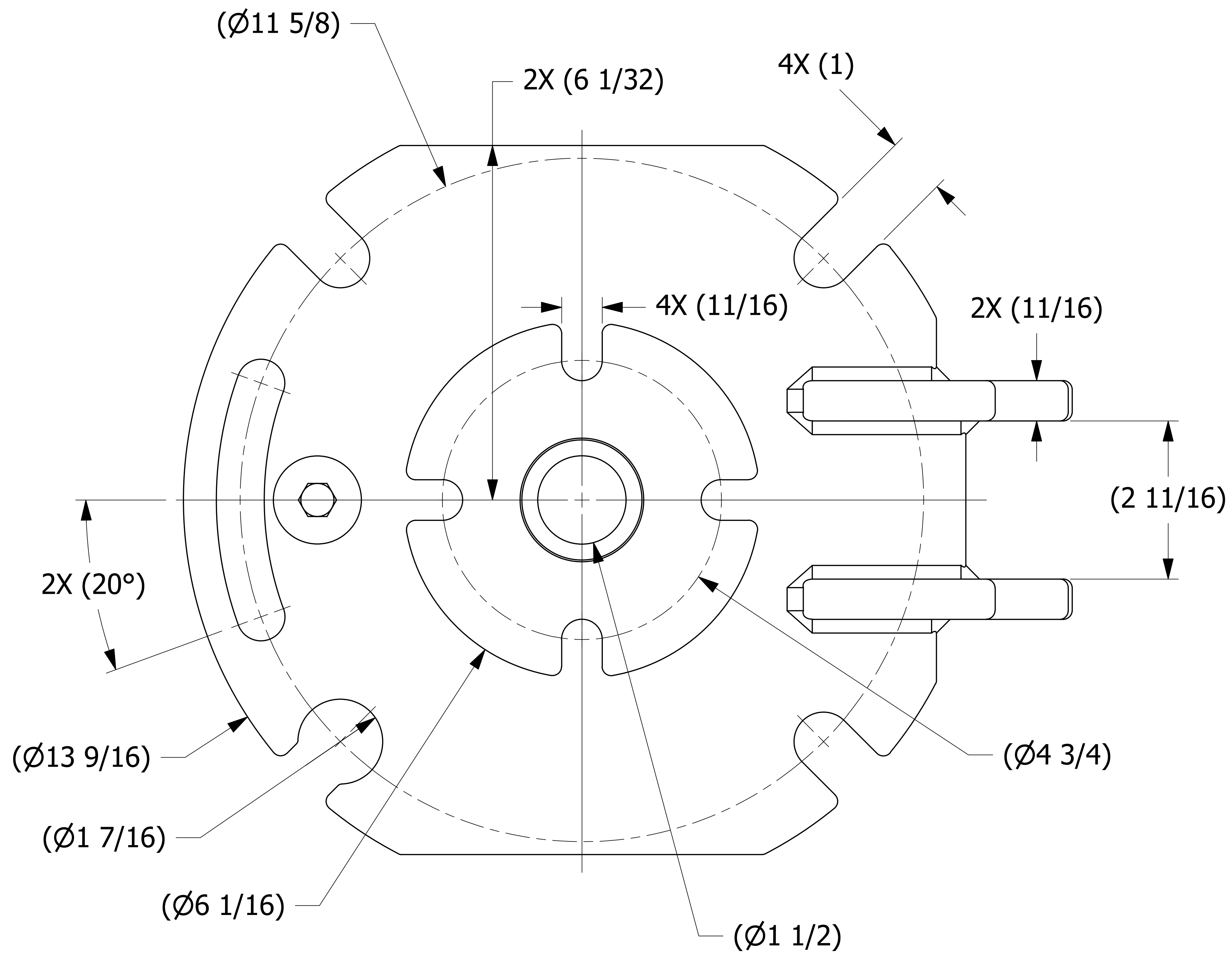
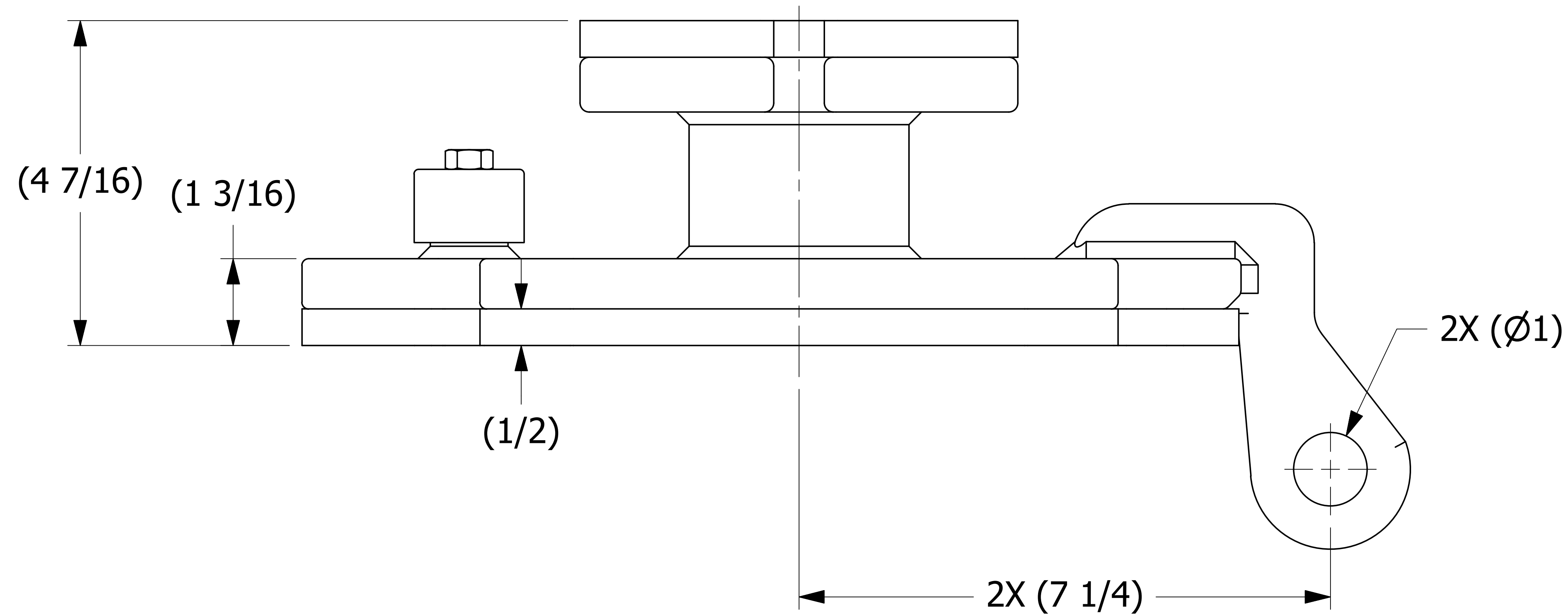


SALES DRAWING SALES DRAWING SALES DRAWING SALES DRAWING

SALES DRAWING SALES DRAWING SALES DRAWING SALES DRAWING



ISOMETRIC VIEW



UNLESS OTHERWISE SPECIFIED DIMENSIONAL TOLERANCES FRACTIONAL: $\pm 1/16$ X.XX: $\pm .03$ X.XXX: $\pm .015$ ANGULAR: $\pm 1^\circ$ DEBURR ALL SHARP EDGES. ALL MACHINED SURFACES TO HAVE A 125 RMS FINISH UNLESS NOTED OTHERWISE. THIRD ANGLE PROJECTION	DRAWN BY:	GS
	CHECKED BY:	CHL
	PROTOTYPE BY:	GS
	PROTOTYPE DATE:	6/28/2012
	APPROVED FOR PRODUCTION BY:	CHL
	PRODUCTION DATE:	10/18/2012

REV	BY	DATE	DESCRIPTION
F	TAK	2-12-19	Q-2.15.7 WAS QAP4C-1; Q-2.15.11 WAS QAP4S-1; REPLACED CPV375X125 W/ A45123 & HB70104
E	TAK	11-9-17	ADDED QAP4C-1 & CPV375X125
D	TAK	6-8-17	UPDATED DIMS TO REFLECT CHANGES TO E33608
C	WEB	5-21-14	REPLACED C28198 WITH C31618
B	WEB	5-8-14	REPLACED A28212 W/ A38966 REPLACED TITLEBLOCK ADDED NOTE 3 & 4, UPDATED DIMS
A	BG	10-18-12	NEW PART ADDED TO THE NETWORK

SALCO PRODUCTS, INC.			
PART NAME: FILL HOLE COVER 8" LINED			
MATERIAL: SALCO PE/CS/SS/PVDF			
PROJECT #:	120627	SHEET #:	1 OF 1
DRAWING #:	E33609	PART #:	LC820AVPE01
SCALE:	1:1		